

# The Champlain Parkway Project

Ward 6  
Neighborhood Planning Assembly  
April 1, 2021



**Champlain  
Parkway Project**  
Burlington, VT



U.S. Department of Transportation  
**Federal Highway Administration**

 **VERMONT**  
AGENCY OF TRANSPORTATION



# What is the Champlain Parkway?



- The Champlain Parkway will be a 2 lane, 25 MPH road built with significant pedestrian, cycling and traffic safety improvements and with environmental equity in mind
- Within the Maple-King neighborhood, rather than building a new road, it makes use of existing Pine Street after significant pedestrian improvements are made



# Champlain Parkway Project Area



**Champlain  
Parkway  
Project**

# Champlain Parkway Project Goals

- Improve access from the I-189/U.S. Route 7 interchange to the Burlington City Center District and the downtown waterfront area
- Improve circulation, improve mobility, improve safety on local streets in the project study area
- Provide traffic relief in the southwestern quadrant of the City of Burlington
- Reduce disruption to local neighborhoods and separate the local and through-traffic
- Reduce truck traffic from the local street network



# Project History

1960's: City & Vermont Department of Highways recognized lack of north/south transportation facilities

1979: Final Environmental Impact Statement (FEIS)



**BURLINGTON WATERFRONT** 1" = 50' 6' x 32' overall



**Champlain  
Parkway  
Project**

# Project History

1960's: City & Vermont Department of Highways recognized lack of north/south transportation facilities

1979: Final Environmental Impact Statement (FEIS)

1997: Final Supplemental Environmental Impact Statement (FSEIS)

2009: Final Supplemental Environmental Impact Statement and 2010 Record of Decision (ROD)

May/June 2010: Four Public Meetings to Address:  
Mobility  
Neighborhood and Community Issues  
Economic Development  
Environment

November 2015: Public Meeting - Pine Street Safety Enhancements

September 2019: Public Outreach Meeting for Greater Maple/King Neighborhood

October 2019: FHWA rescinds 2010 ROD

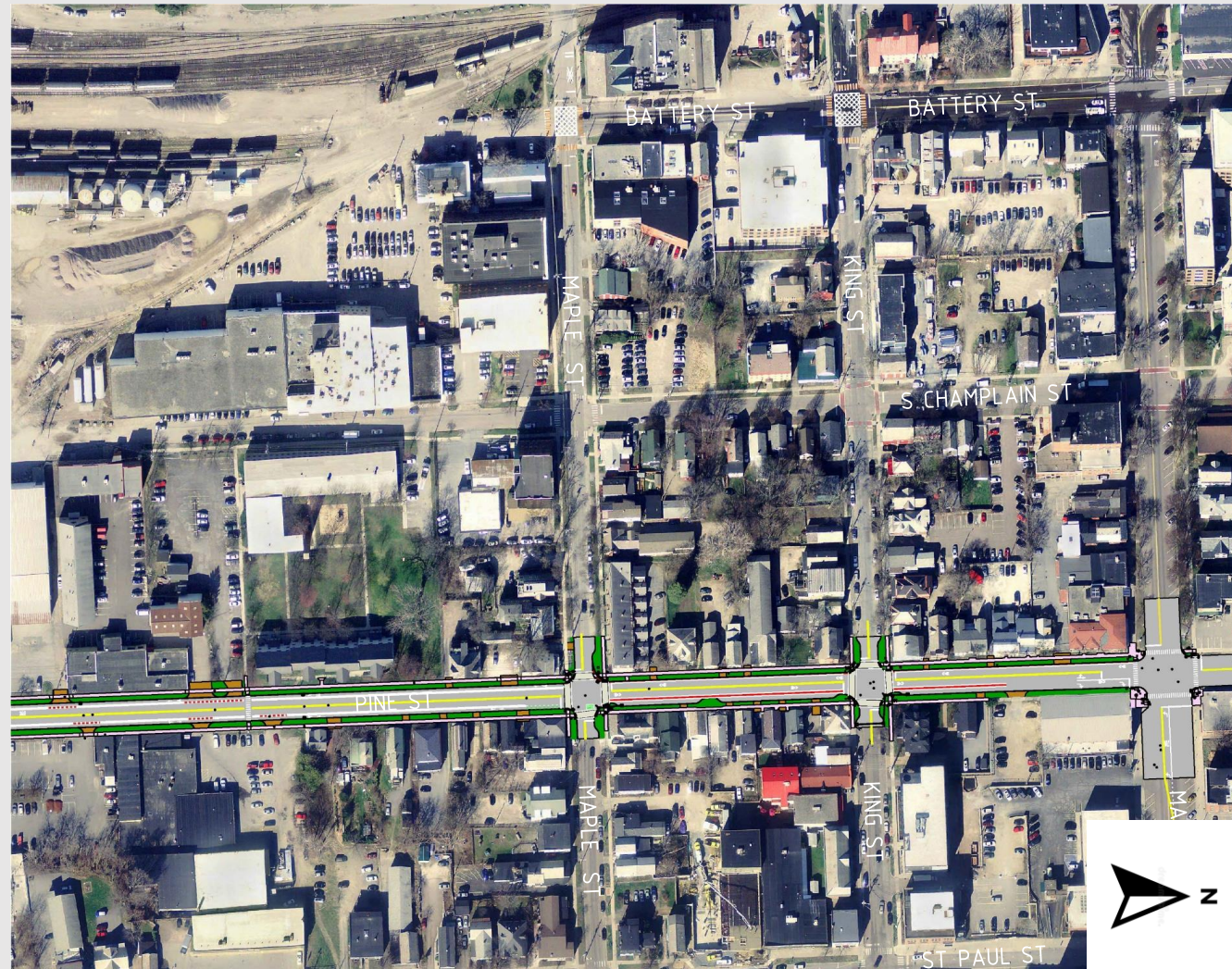
2020: FHWA issues Notice of Intent to prepare a Limited Scope Draft Supplemental Environmental Impact Statement (LS DSEIS)

July 2020: FHWA published the LS DSEIS for public and agency review. Public Hearing conducted virtually and in-person



**Champlain  
Parkway  
Project**

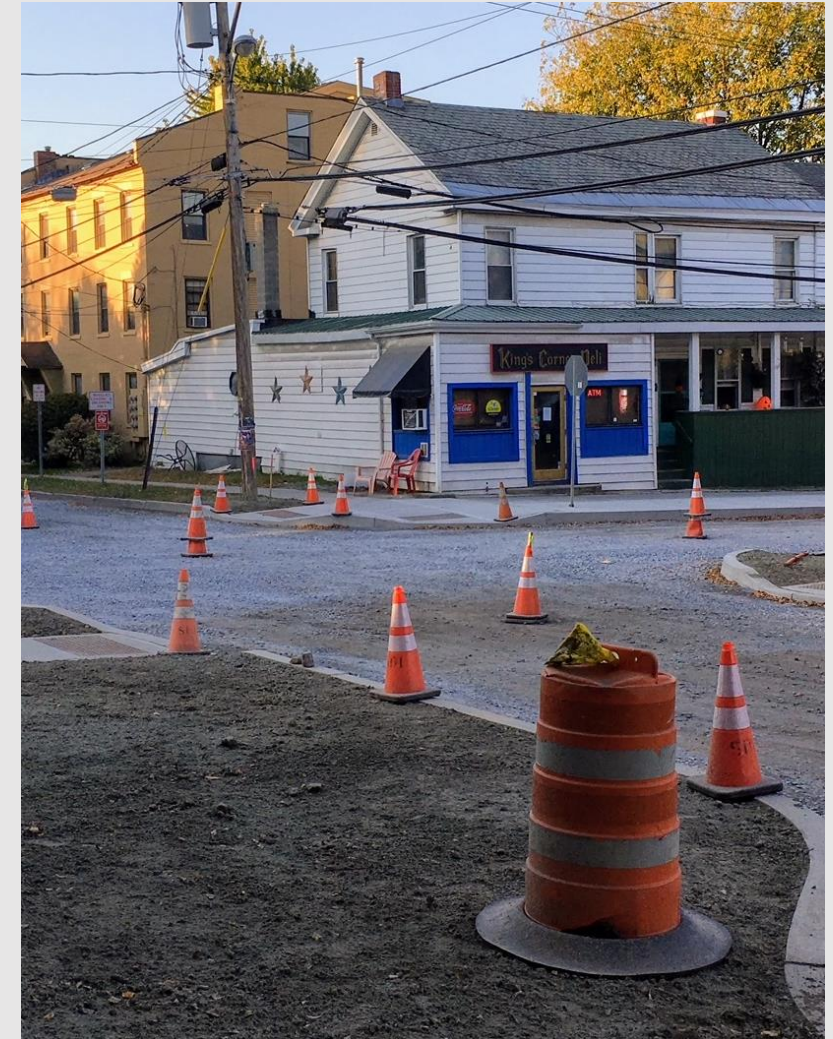
# Maple Street and King Street Neighborhood



**Champlain  
Parkway  
Project**

# Recent, Historic Efforts in King & Maple Neighborhood

- 2014 – Installed crosswalk and RRFB at Pine St and Bobbin Mill Apartments
- 2016 – Installed subsurface stormwater tank on King St
- 2017 – Installed traffic calming on King St
- 2017 – Repaved King St
- 2018 – Relined Pine St sewer mains
- 2018 – Replaced water main on Maple St
- 2018 – Relined water mains on Pine St and King St
- 2018 – Repaved Maple St
- 2019 – Upgraded to pedestrian actuated signals at Battery and Maple St intersection
- 2020 – Completed St Paul St comprehensive rehabilitation to Great Streets standards
- \$5M+ capital reinvestment over last five years

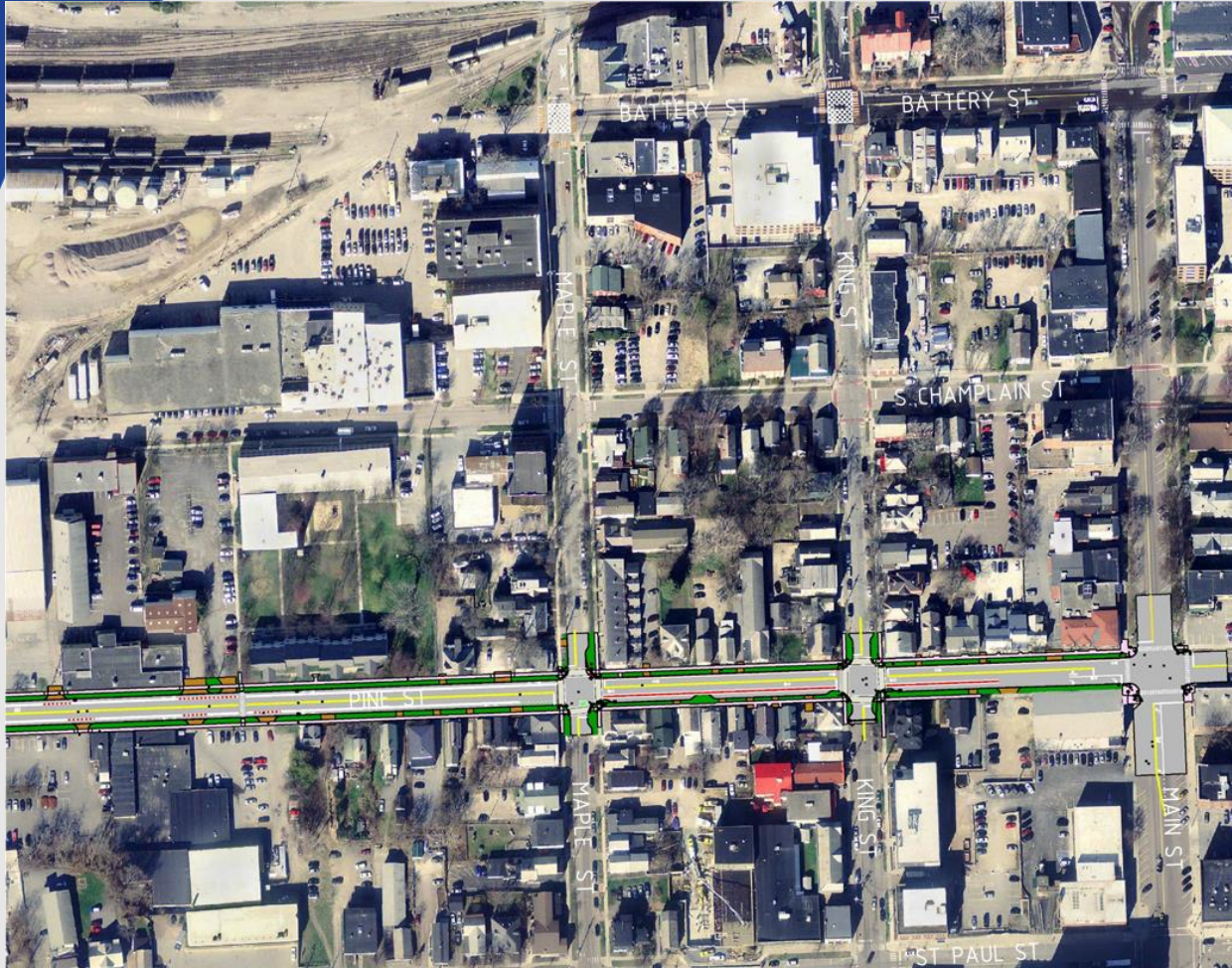




# Recent, Historic Efforts in King & Maple Neighborhood



# Champlain Parkway is Safer for Pedestrians



- Redesigning traffic flow to prioritize pedestrians with exclusive crossings
- Filling in a sidewalk gap in the sidewalk network on a key route between Maple St and Champlain Elementary
- Rebuilding sidewalks up to ADA standards
- Crosswalks and raised intersections to slow traffic
- Reduced truck traffic on Maple St
- Reduced traffic in front of Champlain Elementary
- Brick colored crosswalks and curb extensions at the Pine/Maple and Pine/King intersections
- On-road bicycle accommodations



# Champlain Parkway Improves Traffic Flow

- Reduces truck traffic on Maple Street
- Reduces traffic in front of Champlain Elementary School
- Synchronizes traffic signals to optimize traffic flow
- Maintains on-street parking in accordance with City ordinances
- A safer corridor for everyone: Traffic signals will include Emergency Vehicle Preemption and Transit Signal Prioritization



# Champlain Parkway Delivers Environmental Benefits



- Removal of 12 acres of impervious surface runoff from combined sewer system
- The new stormwater treatment facility adjacent to Lakeside Avenue is projected to reduce the sediment currently being discharged to the Pine St Barge Canal by 1,344 pounds per year
- The stormwater improvements from the Champlain Parkway will have a direct impact on Blanchard Beach and Oakledge Park – free City resources available to everyone and the closest lake beach to Maple & King
- Reduces congestion and idling at Pine St & Maple St intersection



# Public Engagement – Maple/King Neighborhood

- **2010-2016:**
  - Neighborhood meetings for traffic calming and enhancements
- **September 2019: Public Meeting**
  - Targeted Maple/King Neighborhood
  - Meeting held in-person at City Hall
  - Meeting announcements mailed to residents in multiple languages
  - Interpreters available at meeting
  - Informal Open House before and after presentation
  - Outreach and individual meetings with local community stakeholders (including Burlington Housing Authority, Champlain Housing Trust, the Family Room, and King St Center) in advance of the meeting
- **October 2019: Open House**
  - Held at King St Center
  - Project team available to answer questions
- **July 2020: NEPA Public Hearing**
  - In-person at DPW Garage and Virtual
  - Meeting announcements mailed to King/Maple neighborhood in multiple languages
  - Meeting announcements distributed through email, DPW's Facebook page, Front Porch Forum, and advertised in the Burlington Free Press and Seven Days newspaper
  - Interpreter services available upon request
  - Information sheets and narrated videos posted to the project website in multiple languages



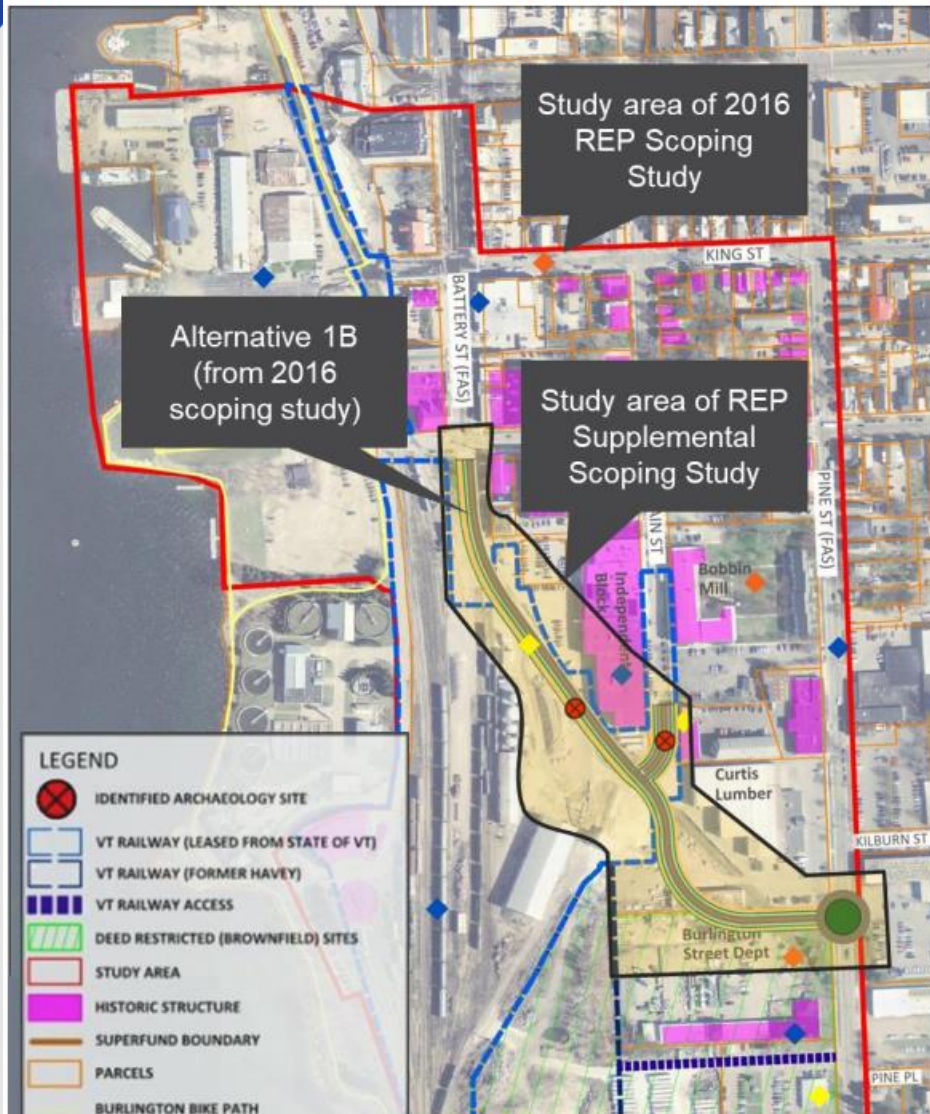
# Environmental Justice

- Limited Scope Draft Supplemental EIS issued July 10, 2020
  - Limited in Scope of Issues: impacts to low-income and minority populations
  - Limited to Pine Street, between Maple and Main Street
- Determination of No Disproportionately High and Adverse Effects:
  - Based on EJ analysis, it is concluded that the Project will improve transportation mobility and safety for all users and will not cause disproportionately high and adverse effects on the Maple and King Street Neighborhood



# There is more to come – a separate project, the Railyard Enterprise Project is advancing

FIGURE 1-4: STUDY AREA OF REP SUPPLEMENTAL SCOPING STUDY



- Projected to divert 35%-59% of traffic away from the Maple/King neighborhood – depending on the Selected Alternative

## Project Goals:

- Support economic development
- Improve livability of the surrounding neighborhood (including Maple and King)
- Enhance multimodal travel connectivity between the Pine St corridor and Battery St in the Burlington Waterfront South area
- Improve intermodal connections to the Burlington Railyard

# Question & Comments



**Additional Information:**  
[www.champlainparkway.com](http://www.champlainparkway.com)

**Contact the Champlain Parkway  
Project Team anytime!**

Email: [info@champlainparkway.com](mailto:info@champlainparkway.com)

Telephone Hotline: 802-496-8656



**Champlain  
Parkway  
Project**